

11-1-2017

# Using Historical Interlibrary Loan Data and OCLC to Downsize our Print Journal Collection

Mike Hawthorne

Wayne State University, Mike\_Hawthorne@wayne.edu

Andy Breeding

OCLC, breeding@oclc.org

James E. Van Loon

Wayne State University, jevanloon@wayne.edu

Brittany Hill

Wayne State University, brittany.hill4@wayne.edu

Paul Beavers

Wayne State University, aa6536@wayne.edu

---

## Recommended Citation

Hawthorne, M., Breeding, A., Van Loon, J., Hill, B., & Beavers, P. (2017, November). Using Historical Interlibrary Loan Data and OCLC to Downsize our Print Journal Collection. Presentation at the Charleston Conference : Issues in Book and Serial Acquisition, Charleston, SC.

Available at: <https://digitalcommons.wayne.edu/libsp/133>

This Presentation is brought to you for free and open access by the Wayne State University Libraries at DigitalCommons@WayneState. It has been accepted for inclusion in Library Scholarly Publications by an authorized administrator of DigitalCommons@WayneState.

# Using Historical Interlibrary Loan Data and OCLC to Downsize our Print Journal Collection

Mike Hawthorne, Andy Breeding, James Van Loon,  
Brittany Hill, Paul Beavers

Wayne State University Libraries

# Outline

- Opening-Hawthorne/Beavers 8min
- OCLC-Breeding 8min
- Data-Hill 8min
- Criteria-Van Loon 8min

[Mike Hawthorne & Paul Beavers]

# **INTRODUCTION & BACKGROUND**



# Wayne State University

- A public research university—Carnegie Classification “Doctoral University: Highest Research Activity.”
- Founded in 1868
- Located in Detroit’s cultural center
- 13 schools and colleges, 350 programs, more than 27,000 students

# WSU Libraries

- The WSU Library System encompasses both the School of Information Sciences and the University Libraries
- Five Libraries:
  - Purdy/Kresge Library
  - Adamany Undergraduate Library
  - Neef Law Library
  - Shiffman Medical Library
  - Reuther Library of Labor and Urban Affairs

# WSU Libraries

- The Science & Engineering Library Closed to the public in 2014; its collections are still stored in the building
- The Science & Engineering building is about to be renovated and fitted as a lab/classroom facility
- This will constitute a loss of 20% of the University Libraries' total shelving

# Deselection & Value

- The question of selection is always a question of valuation.
  - Which titles are currently contributing to research, learning, and teaching?
  - Which titles are most likely to contribute in the future?



# Value Judgments beyond Use

- Serials that we have made a commitment to retain
- Serials related to particular interests at WSU
- Special Collection serials
- Serials published before the 20<sup>th</sup> Century
- Serials highly in demand for ILL

# Additional Value Considerations

- Availability of digital or microform copies
  - The quality of the images
  - The stability of the platforms
  - Hathi Trust
- Our faith in Interlibrary Loan / Document Vendors
- The equity of deselection across discipline

Andy Breeding

**OCLC**

WAYNE STATE  
UNIVERSITY



# OCLC Sustainable Collection Services

- Since 2011

*Helping libraries **manage** and **share** print monographs.*

- We offer GreenGlass, a web application that allows single libraries and library groups to:
  - Visualize their collection in the context of the collective collection
  - Quickly model deselection and print management scenarios
  - Generate lists to support weeding and collection management

# Partnership with Wayne State University

- Customers have asked if we can help with journal deselection.
- As a first step we embarked on custom projects to learn about what was needed in the journals space.
- Wayne State was an early customer and part of the Michigan Shared Print Initiative (MI-SPI), our first shared print project.
  - They had an immediate need
  - Were willing to take a chance on an experimental effort
  - GreenGlass was not an option – Excel lists would be the output

# Journal data that we assembled

- For approximately 50K serial titles
- Wayne State AND matching WorldCat MARC bib records
  - MARC 008 (char 07-10 - Date 1, char 11-14 - Date 2)
  - MARC 362 - Dates of Publication and/or Sequential Designation (R)
  - MARC 780 - Preceding Entry
  - MARC 785 - Succeeding Entry
  - MARC 022 - ISSN
  - Publication Status
- In addition to bibliographic data we already collect for monographs

# Holdings data that we assembled

- Wayne's holding statements
- Holdings statements from 5 selected PAPER repositories
  - CIC Shared Print
  - CRL JSTOR
  - FLARE from Scholar's Trust
  - Linda Hall
  - WEST
- HathiTrust holdings statements
- WorldCat Holdings at title level
  - US / State of Michigan / Wayne State (is local holding set?)
  - Six library comparator groups (e.g., RapidILL, CIC, Health Sciences group)

Included Volume/Issue Level Data  
Matched 27% of Wayne Titles

Public Domain – Matched 18%  
In Copyright – Matched 45%

# ILLiad Transaction Data

- All Wayne State ILLiad transactions pulled – 343K
- We matched 210K (or 61%) of these to their titles
  - Matching was performed using ISSNs and journal title data
  - Data was messy, especially older ILLiad transactions
  - Some transactions were associated with titles not in the extract
  - Wayne supplemented our work with manual title matching
- 27% of Wayne's serial titles had ILLiad transactions
- Per title, the following transaction types were counted
  - Document Delivery
  - Lending
  - Borrowing



# A Look at One Title: *Advances in genetics.*

Wayne State University Serials Listing - Version 10				
Holding Location	Holding Sub-location	LC Subclass	Holding Call Number / Shelving Location	Title
EYWM	mpper	QH	Shelved as: Advances in genetics	Advances in genetics.
EYWS	sbstk	QH	QH 431 .A1 A3	Advances in genetics.
EYWE	bbpdy	QH	575.082 Ad95	Advances in genetics.

# A Look at One Title: *Advances in genetics*.

## Wayne's Holdings

Textual Holdings Statement: Main Run

## PAPR archive holdings

Institutional Holdings from selected PAPR institutions

1-45,48-64 (1947-2008)

LHL - v.1(1947)-v.71(2010); Vol. 34 (1996); Vol. 37 (1998) -Vol. 39 (1999); Vol. 41 (1999) -Vol. 71 (2010); v.73(2011)-v.84(2013); v.73(2011)-v.75(2011) | SL3SP - v.1-v.55

1-33,68 (1947-2009)

LHL - v.1(1947)-v.71(2010); Vol. 34 (1996); Vol. 37 (1998) -Vol. 39 (1999); Vol. 41 (1999) -Vol. 71 (2010); v.73(2011)-v.84(2013); v.73(2011)-v.75(2011) | SL3SP - v.1-v.55

v. 5,10 (1953-1961)

LHL - v.1(1947)-v.71(2010); Vol. 34 (1996); Vol. 37 (1998) -Vol. 39 (1999); Vol. 41 (1999) -Vol. 71 (2010); v.73(2011)-v.84(2013); v.73(2011)-v.75(2011) | SL3SP - v.1-v.55

# A Look at One Title: *Advances in genetics.*

Wayne Local Holding Set	Wayne Local Holding Set on OCLC Work Family	Global WorldCat Holdings	U.S. WorldCat Holdings	U.S. WorldCat Holdings in Work Family	Michigan WorldCat Holdings	Michigan WorldCat Holdings in Work Family
1	1	986	801	848	23	25
1	1	986	801	848	23	25
1	1	986	801	848	23	25

# A Look at One Title: *Advances in genetics.*

Illiad Document Delivery Count for title	Illiad Borrowing Count for title	Illiad Lending Count for title	Illiad Base Fee Sum	Illiad Max Cost Sum
9	30	28	159.3	467
9	30	28	159.3	467
9	30	28	159.3	467

Brittany Hill

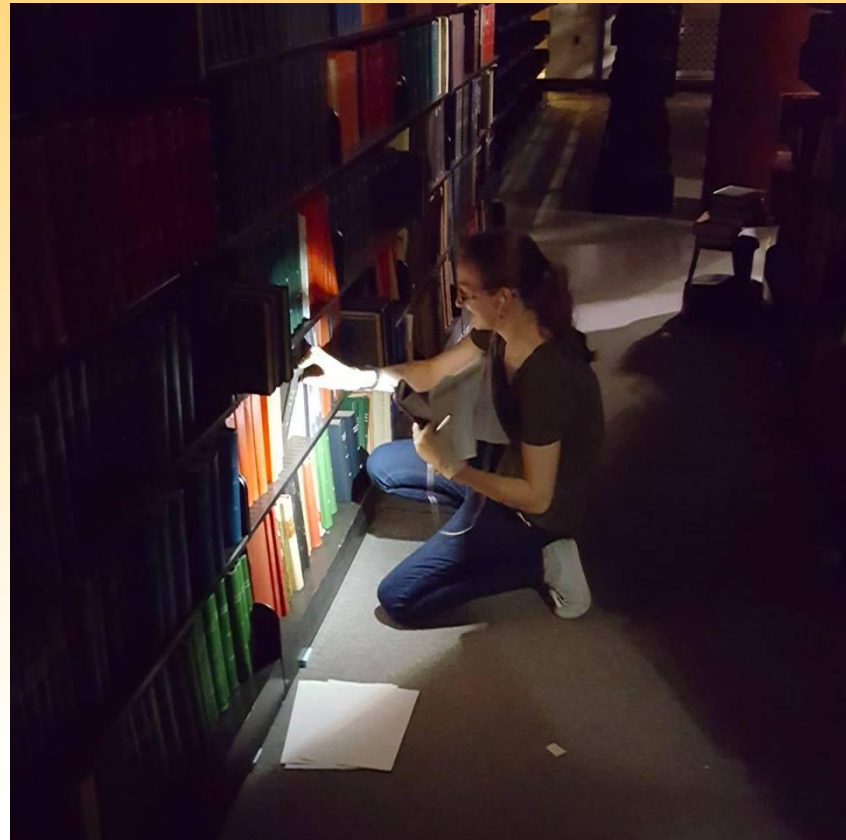
# DATA

# Added Data

- Special Collection items
- LC Subjects
- Revised dates
- Estimated years of holdings
- Percentage of run held
- Duplicates

# Matching Data to Physical Collection

- Journals in five locations
- lists versus shelves



# Data Errors

- Hundreds of record changes made
- Over 300 titles not in catalog



Jim Van Loon

# APPLYING THE CRITERIA



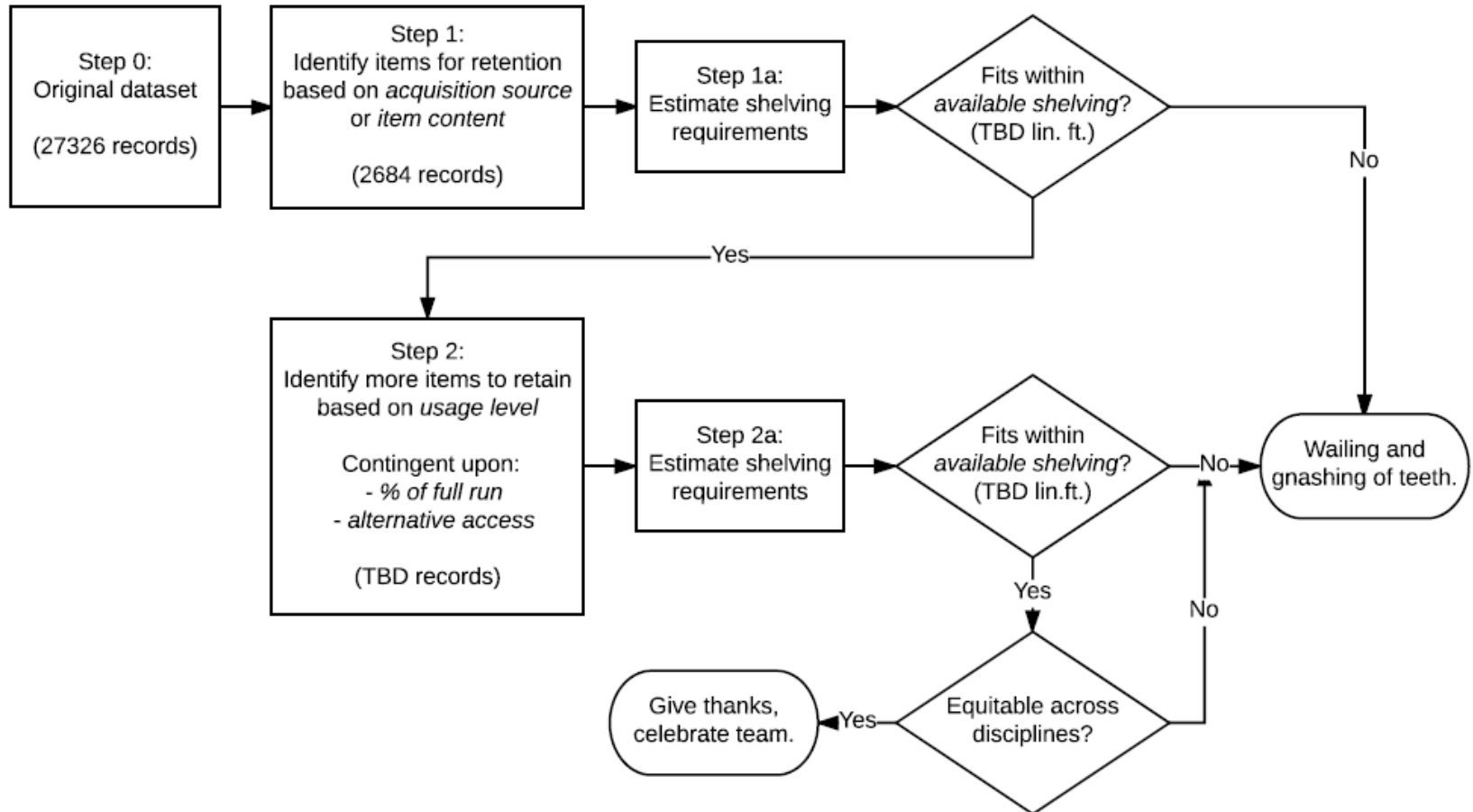
# Application of Criteria

- A work in progress
- Experimenting with applying criteria to the dataset and evaluating results
- Method for estimating shelving requirements for a given set of records not yet defined
- Initially taking a conservative approach (erring on the side of retention)

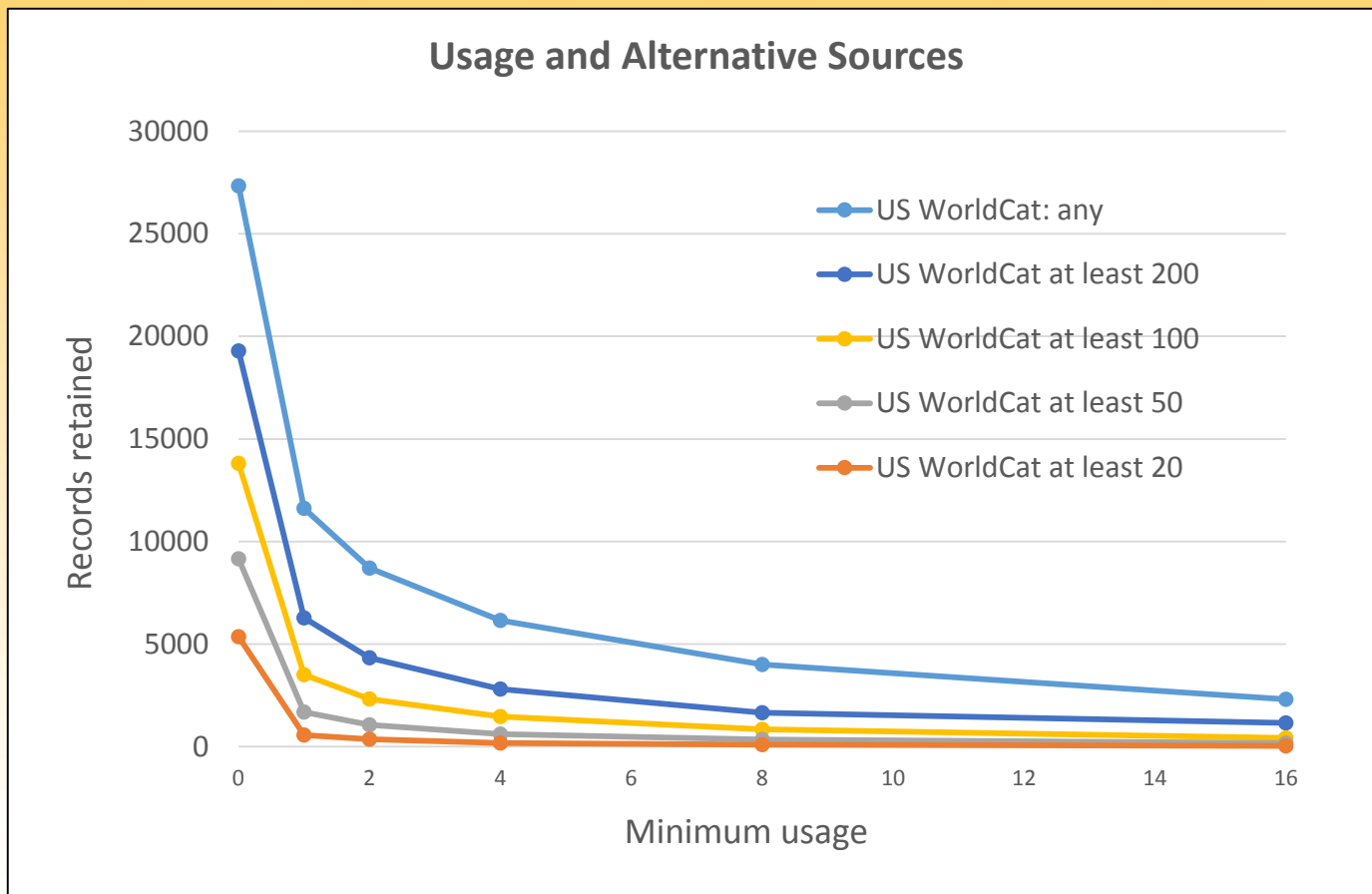
# Summary of Criteria

<b>General Consideration</b>	<b>Specific Criteria</b>
1. Content (retain)	Commitment to retain; particular WSU, Detroit, or Michigan interest; special collections; pre-twentieth century publication
2. Use (retain)	Combination of document delivery and lending requests above TBD level
3. Completeness of holdings (deselect)	% of full run below TBD level
4. Reliable alternative access (deselect)	Electronic or microfilm access deemed stable and permanent, or Number of US holding libraries above TBD level.
5. Shelving space (monitor)	Constraint to currently available
6. Subject balance (monitor)	Equality of sacrifice across subject areas

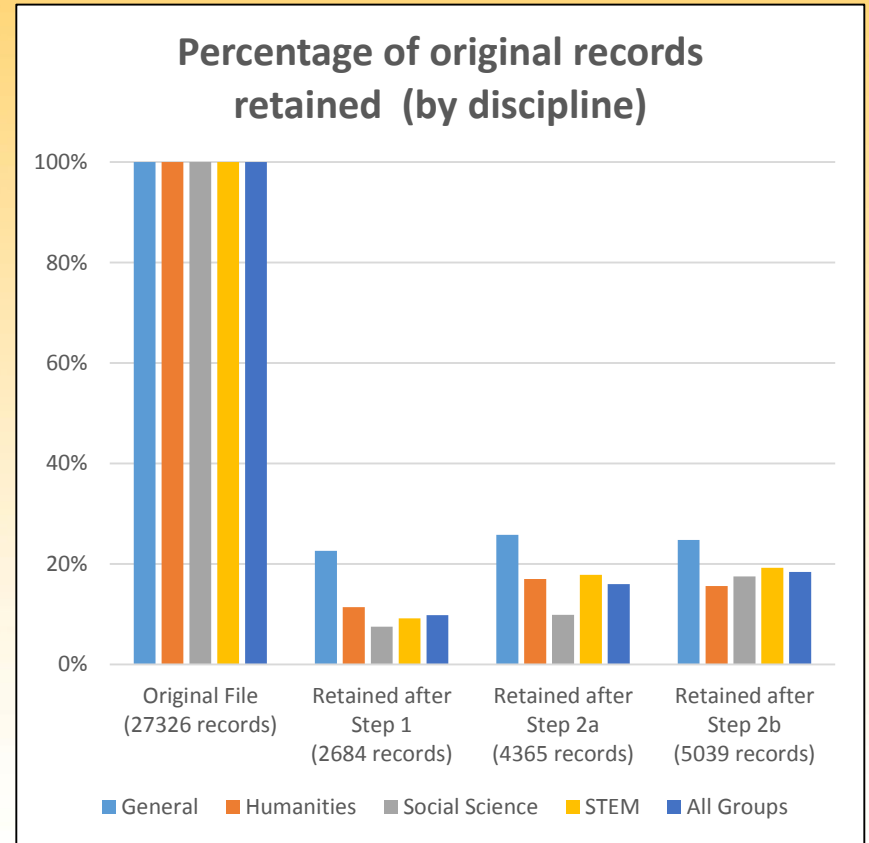
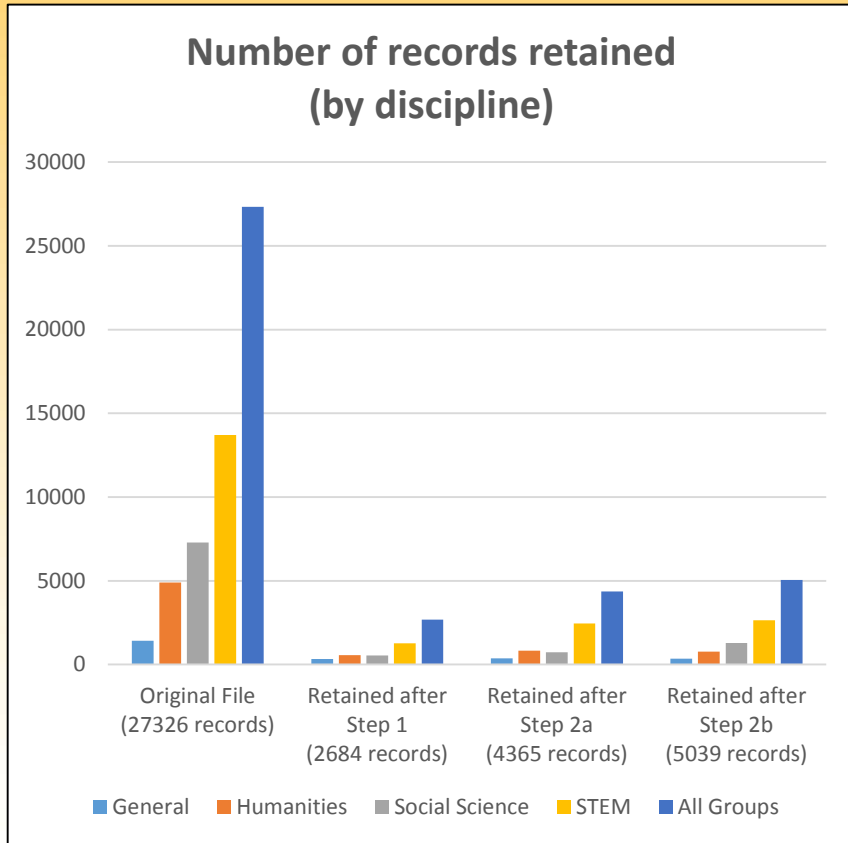
# Tentative Workflow



# Exploration: Usage and Alt Sources



# Exploration: Disciplinary Equity



# Next Steps

- Mapping of records → run\_years → volumes  
→ lineal feet
- Check that our initial retention list can be housed in the available space
- Monitor subject balance of retained items
- Document the decisions and process
- ~~Wailing/gnashing~~