

3-30-2021

## COVID-19 vs. Influenza

David Bai

Wayne State University School Of Medicine, gx7304@wayne.edu

Lewis Graham

Wayne State University School Of Medicine, gt2487@wayne.edu

Sarah Henry

Wayne State University School Of Medicine, gx5822@wayne.edu

Megan Nicholson

Wayne State University School Of Medicine, hf8017@wayne.edu

Bianca Parker

Wayne State University School Of Medicine, fi8138@wayne.edu

*See next page for additional authors*

## Creative Commons License:



This work is licensed under a [No Rights Reserved](#) license.

---

### Recommended Citation

Bai, David; Graham, Lewis; Henry, Sarah; Nicholson, Megan; Parker, Bianca; and Win, Jeff, "COVID-19 vs. Influenza" (2021). *COVID-19 Medical Myth Infographics*. 6.  
<https://digitalcommons.wayne.edu/covidinfographics/6>

This Infographic is brought to you for free and open access by the Open Source Medicine at DigitalCommons@WayneState. It has been accepted for inclusion in COVID-19 Medical Myth Infographics by an authorized administrator of DigitalCommons@WayneState.

---

## COVID-19 vs. Influenza

Follow this and additional works at: <https://digitalcommons.wayne.edu/covidinfographics>

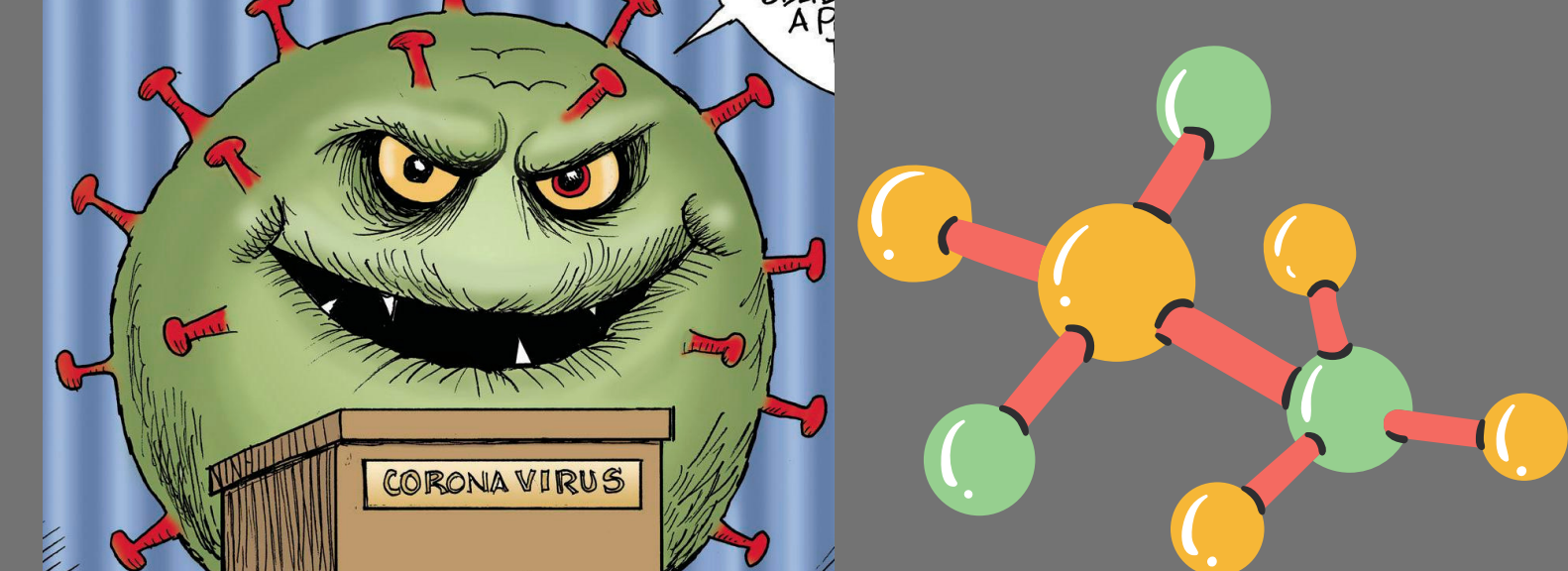


Part of the [Curriculum and Instruction Commons](#), [Medical Education Commons](#), and the [Public Health Commons](#)

### Authors

David Bai, Lewis Graham, Sarah Henry, Megan Nicholson, Bianca Parker, and Jeff Win

# COVID-19 VS INFLUENZA

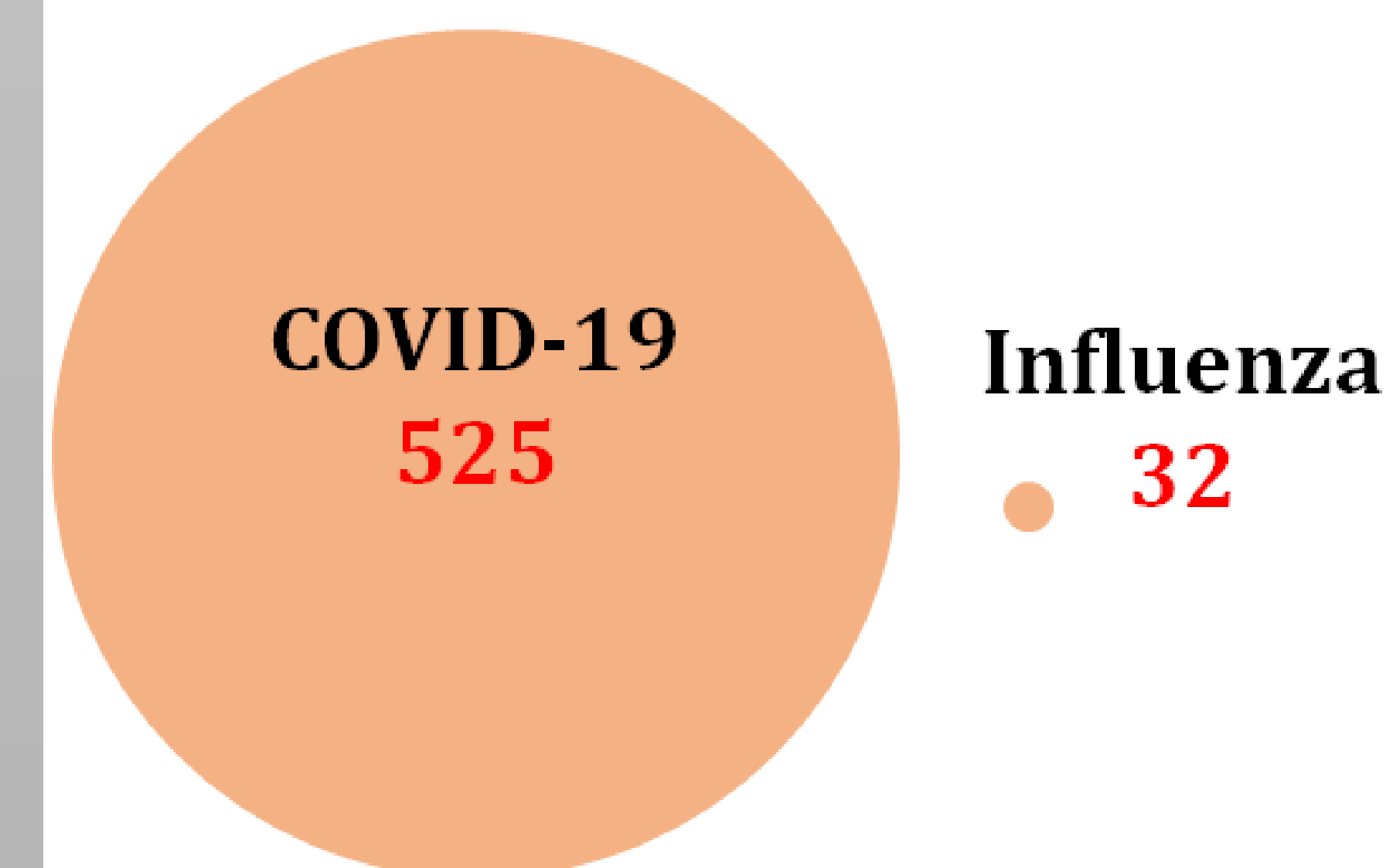


COVID-19	Differences	Influenza
Fever, cough, loss of smell and taste, shortness of breath, chest pain, diarrhea	<p><b>Symptoms</b></p>	Fever, cough, runny nose, sore throat, fatigue
6-7 days	<p><b>Incubation</b></p>	1-4 days
2-3 infected per infected person. Presymptomatic & asymptomatic spread	<p><b>Transmission</b></p>	Approximately 1 person infected per infected person. Symptomatic spread (droplets, skin contact)
Complications -- Severity: 26% Fatality: 4%	<p><b>Mortality + Severe Infection</b></p>	Complications -- Severity: variable Fatality: below 0.1%
Wear a mask! No FDA approved intervention	<p><b>Intervention</b></p>	<p>Tamiflu</p>
No -- Currently in development	<p><b>Vaccine</b></p>	Yes -- FDA approved seasonal vaccine



**Please wash your hands under hot water for at least 20 seconds**

Cases after 5 people spread their infection



**Please wear masks when in public**