

3-28-2015

The League of Librarians: Combining our Powers to Create Sustainable Service

Judith Arnold

Wayne State University, ay4047@wayne.edu

Veronica Bielat

Wayne State University, vbielat@wayne.edu

Joshua Neds-Fox

Wayne State University, dp5745@wayne.edu

Recommended Citation

Arnold, Judith; Bielat, Veronica; and Neds-Fox, Joshua, "The League of Librarians: Combining our Powers to Create Sustainable Service" (2015). *Library Scholarly Publications*. Paper 94.
<http://digitalcommons.wayne.edu/libsp/94>

This Presentation is brought to you for free and open access by the Wayne State University Libraries at DigitalCommons@WayneState. It has been accepted for inclusion in Library Scholarly Publications by an authorized administrator of DigitalCommons@WayneState.

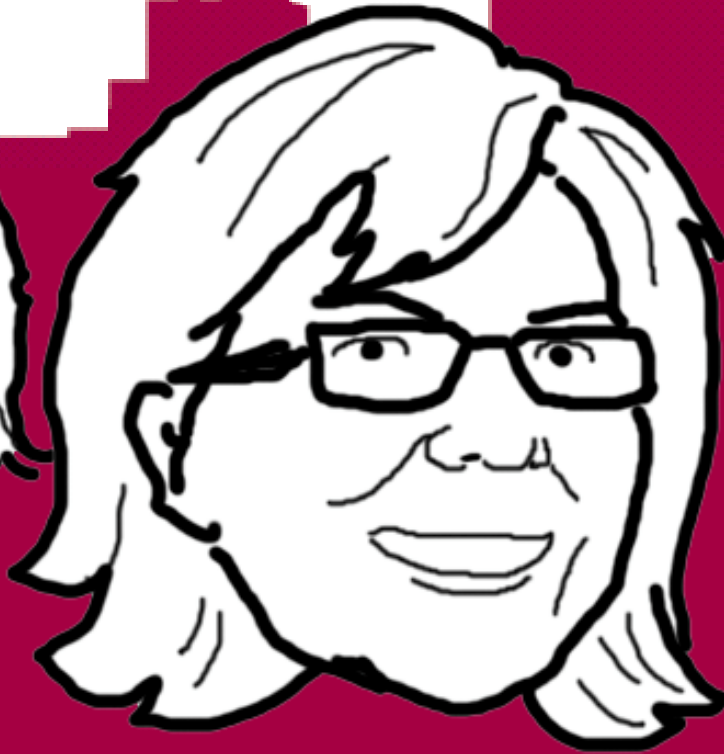
**COMBINING
OUR POWERS
TO CREATE
SUSTAINABLE
SERVICE**

**JUDITH ARNOLD
VERONICA BIELAT
JOSHUA NEDS-FOX**

**WAYNE STATE UNIVERSITY
ACRL 2015, PORTLAND, OR**



#LIBRARIANLEAGUE



State Funding: A Race to the Bottom

- Michigan has accelerated higher education cutbacks during the past decade. This has advanced the date on which state funding will reach zero from 2059 to 2032.

Legislature's roads plan could impact higher education funding

Bridge

States Are Still Funding Higher Education Below Pre-Recession Level

By Michael Mitchell, Vincent Palacios, and Michael Leachman
May 1, 2014

Nearly every state has shifted costs to students over the last 25 years — with the most drastic shift on onset of the recession. In 1988, average tuition amounts were larger than per-student state expenditures in New Hampshire and Vermont. By 2008, that number had grown to ten states. Today, tuition outweighs government funding for higher education in 23 states with six states — New Hampshire, Delaware, Colorado, Rhode Island, Michigan, and Pennsylvania — asking students and families to pay more than state education costs by a ratio of at least 2-to-1.[32]



WSU president: State funding formula stresses college

By David Jesse, Detroit Free Press 4:36 p.m. EST February 22, 2015

Michigan's performance funding system penalizes the university for doing heavy research while having a more open enrollment policy, he says

Thanks for the feedback! [Undo](#)

We'll use your feedback to review ads on this site.

A recent report by HCM Strategists looked at performance funding systems across the nation and lumped Michigan's in a category they call "rudimentary." They also

The State News

Friday, March 13, 2015



FRONT NEWS SPORTS MULTIMEDIA OPINION BLOGS FEATURES

Search

Thanks for the feedback! [Undo](#)
We'll use your feedback to review ads on this site.
Help us show you better ads by updating your [ads settings](#).

Google

Report: Michigan has more severe funding cuts than those in other states

Are more higher education funding cuts on the horizon?



Between 2008 and 2012, Michigan cut about a third of its higher education funding, when adjusted for inflation, the 13th highest rate in the nation. Only two states, Wyoming and North Dakota, increased higher education funding during that period. The national average was a 28 percent cut.

More and analysis from The Center for Michigan

**CHANGING
TECHNOLOGIES**

COPYRIGHT

**OPEN
ACCESS
PUBLISHING**

**BIG
BAD
DATA**

**ABUNDANCE
OF DIGITAL
INFORMATION**

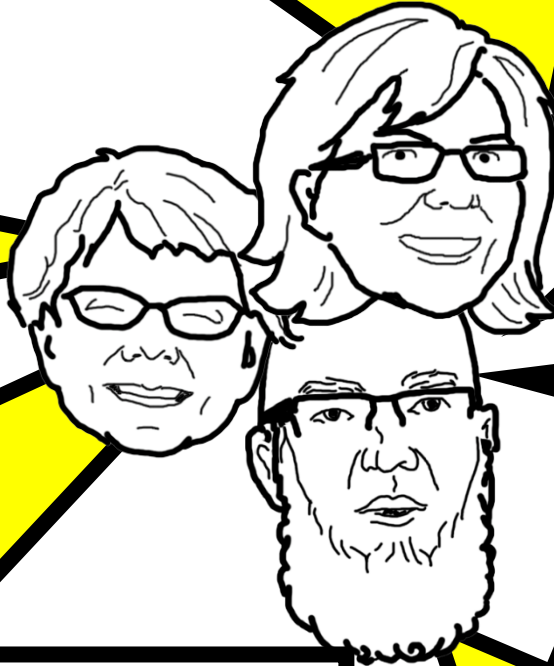
DIGITIZATION

**JOURNAL
REVIEW**

**PRESSURE
ON
RESEARCHERS**

**EVOLVING
RESEARCH
METHODS**

INSTRUCTION





WHERE IS THE SOLO LIAISON MODEL FAILING YOU?

**PADLET.COM / WSUINST / SOLOLIBRARIAN
(OR LINK FROM TWITTER #LIBRARIANLEAGUE)**

FROM OUT OF THE ASHES...

...THE ELEMENTS OF A NEW TEAM

ORGANIZATIONAL FLEXIBILITY

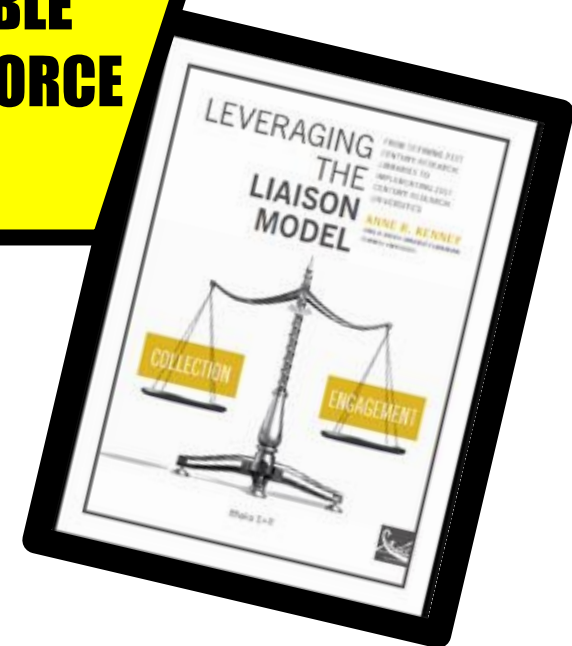
COLLABORATION IS KEY

USER-CENTERED SERVICES

HYBRID MODEL

NO LIAISON IS AN ISLAND

FLEXIBLE WORKFORCE





THE LEAGUE
OF
LIBRARIANS

**FLEXA -
WOMAN!**

***AKA*
LIAISON
COORDINATOR**



LIAISONS

**EMBRACE THE
EXPANSIVE POWERS OF
FLEXIBILITY AND
COLLABORATION**



**BIG BAD
DATA**

**OPEN
ACCESS**

**HYBRID
MODEL**

**STRETCHING
STAFF**

**ONLINE
INSTRUCTION**

**FACULTY
PUBLISHING**



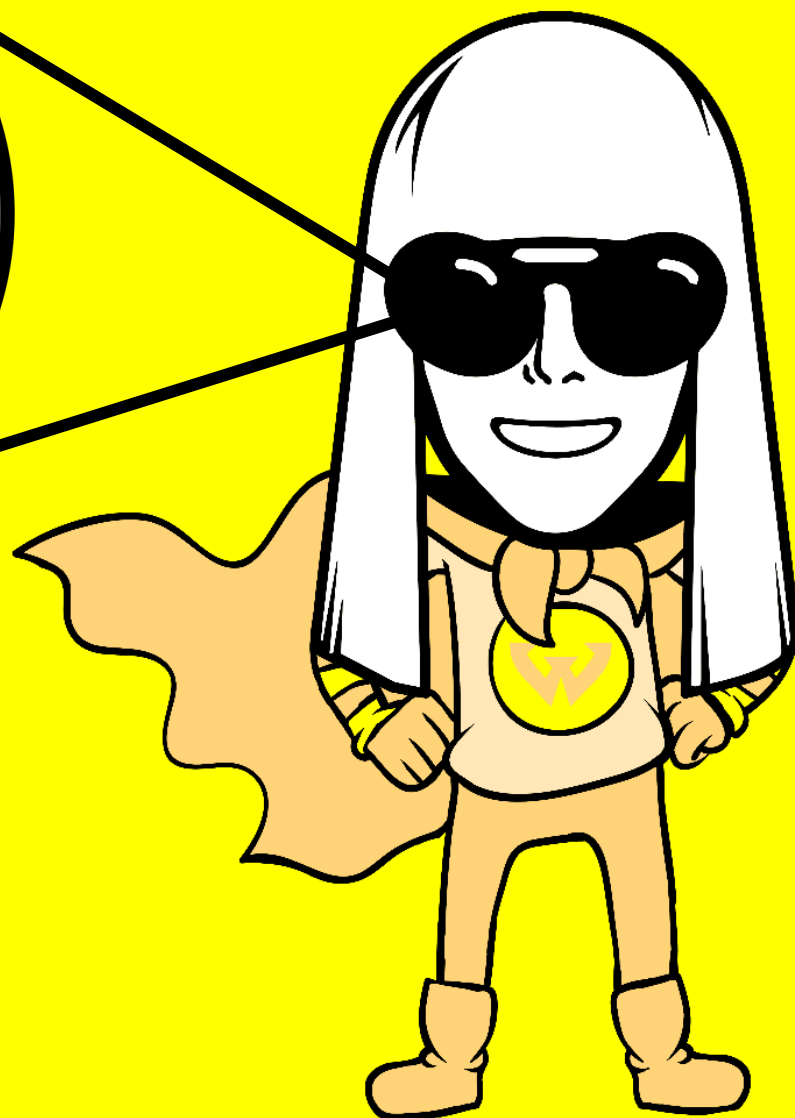


VISIO!

**AKA FRONTLINE
LIAISON**

**SEE OPPORTUNITY
IN THE USER SPACE TO
CONNECT PEOPLE,
SERVICES AND
RESOURCES**

**SHRINKING
THE FACULTY
LEARNING
CURVE**



Permalink Request

If you would like to create your own permalink Blackboard Building Block.

If you have a list of course readings, we can create a Blackboard Building Block for your University library system and provide you with the following form to request this service.

Allow up to 14 days processing from time of request.

Your Information

* Required

* Instructor Name:

Joann Smythe

* Email:

jsmythe@wayne.edu

Phone:

7-6294

Campus Address:

104 FAB

* Course Name:

Urban and Regional Planning

Course Number:

GEO 5582

Course Readings

Copy/Paste your Reading List

Baud, I., Grafakos, S., Hordijk, M., & Post, J. (2001). Quality of life and alliances in solid waste management. *Cities*, 18(1), 3-12.
Beaverstock, J. V., Smith, R. G., & Taylor, P. J. (2000). World-city network: A new metageography. *Annals of the Association of American Geographers*, 90(1), 123-134.
Burgess, E. W. (1928). Residential segregation in American cities. *Annals of the American Academy of Political and Social Science*, 140, 105-115.
Campbell, S. (1996). Green cities, growing cities, just cities? Urban planning and the contradictions of sustainable development. *Journal of Planning Association*, 62(3), 296-.

twinkl

Type the text

[Privacy & Terms](#)



Submit

Permalink Request Form

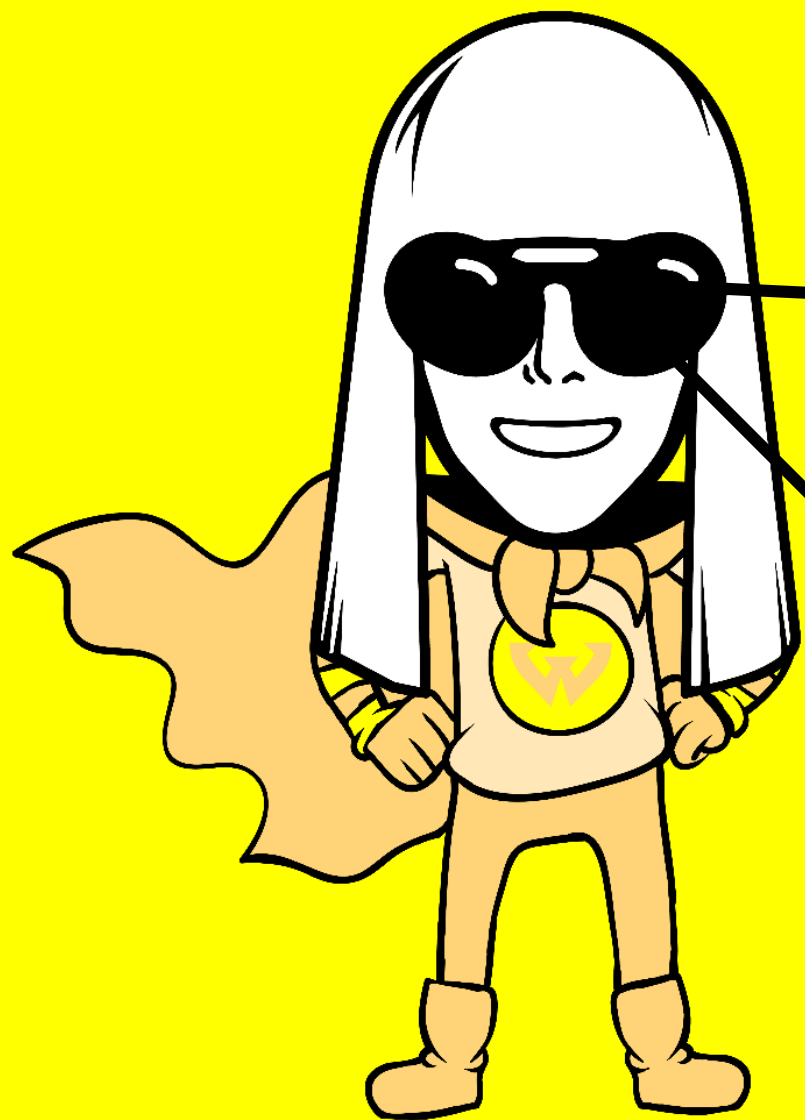
Unanswered Questions (9) Pending Comments (0) Replies (0) Errors (0) Spam (0)

ID: Claim Status: All Source: All Sources Question: Name/Email: Filter:

Which Library? View All

Id	Asked on	Asked by	Question	Claimed by	Latest Note
1117380	2015-03-23 09:56:01	jsmythe@wayne.edu jsmythe@wayne.edu (Show demographic data)	Persistent Link Request Form Submission Requestor Information: /// Instructor Name: Joann Smythe /// Email: jsmythe@wayne.edu /// Phone Number: 7-6294 /// Campus Address: 104 FAB /// Course Name: Urban and Regional Planning /// Course Number: GEO 5582 /// Reading List: /// Baud, I., Grafakos, S., Hordijk, M., & Post, J. (2001). Quality of life and alliances in solid waste management. <i>Cities</i> , 18(1), 3-12. Beaverstock, J. V., Smith, R. G., & Taylor, P. J. (2000). World-city network: A new metageography. <i>Annals of the Association of American Geographers</i> , 90(1), 123-134. Burgess, E. W. (1928). Residential segregation in American cities. <i>Annals of the American Academy of Political and Social Science</i> , 140, 105-115. Campbell, S. (1996). Green cities, growing cities, just cities? Urban planning and the contradictions of sustainable development. <i>Journal of Planning Association</i> , 62(3), 296-.	You. Answer Unclaim	Sent notice to Mary on 3/23 View all notes

LibAnswers



**ZAPPING
SINGLE
POINTS OF
FAILURE**

Teachers College Record
The Voice of Scholarship in Education

Subscribe today to the most trusted name in education. Learn more >>

ALL ISSUES | CURRENT ISSUE | TCR BOOK REVIEWS | SUBSCRIPTIONS | ABOUT TCR RECORD | ADVANCED SEARCH

Current Year Issue:

- Volume 117, Number 1
- Volume 117, Number 2
- Volume 117, Number 3

Welcome friends from WAYNE STATE UNIV!

Your institutional subscription to the Teachers College Record includes full-text access to all articles for the past ten years plus all articles that have already appeared in print for the current year.

UNDERSTANDING FISCAL RESPONSIBILITY

A curriculum for teaching about the federal budget, national debt, and budget deficit

EdLab

All Years:

- 2004
- 2005
- 2006
- 2007
- 2008
- 2009
- 2010
- 2011
- 2012
- 2013
- 2014
- 2015

Site License Agreement

WAYNE STATE UNIVERSITY LIBRARIES

College Students, Diversity, and Community Service Learning

Author: Seider, Scott
Journal: Teachers College record (1970)
ISSN: 0161-4681
Date: 01/01/2013
Volume: 115 Issue: 3

Single Journals -
1999 - present

Find this item.

Report a problem

Still no full-text? Request item through interlibrary loan

Check catalog by journal title

Check catalog by journal ISSN

Ask a Librarian

Email Export

Classic Link Resolver

**No full-text?
Student selects
"Report a Problem"**

Report a problem

Send report and we'll investigate the problem. Enter your name and email only if you wish to be contacted.

Name:
Rakesh Sen

Email:
rsen@wayne.edu

Message:
I cannot find the article

Cancel Send Report

Id	Asked on	Asked by	Question	Claimed by	Latest Note
1117402	2015-03-23 10:19:31	noreply@serialssolutions.com noreply@serialssolutions.com (Show demographic data)	<p>Problem Link Report: from Rakesh Sen A problem was reported about the following link:</p> <p>Inbound OpenURL query:</p> <p>http://up7af9tu5s.search.serialssolutions.com/?genre=article&atitle=College%20Students%2C%20Diversity%2C%20and%20Community%20Service%20Learning&title=Teachers%20College%20Record&issn=14679620&isbn=&volume=115&issue=3&date=20130101&aulast=Seider%2C%20Scott&spage=&pages=&sid=EBSCO:ERIC:EJ1018103</p> <p>Link to the following resource did not work:</p> <p>Single Journals</p> <p>Outbound full-text link:</p> <p>./log?L=UP7AF9TU5S&D=SJN&J=TEACCOLREC1&P=Link&U=http%3A%2F%2Fproxy.lib.wayne.edu%2Flogin%3Furl%3Dhttp%3A%2F%2Fwww.tcr.org%2Flibrary%2F</p>		You. Answer Unclaim Add a note

**Student completes form.
Report sent to LibAnswers**

A cartoon superhero character with long white hair, black sunglasses, and a yellow and orange suit with a yellow emblem on the chest. The character is standing with hands on hips. A speech bubble is connected to the character's mouth by a black line. The background is a solid yellow color.

**SCALING OUR
PRESENCE
IN THE
CLASSROOM**

Course+LibGuide Listing Entry

BlackBoard to LibGuides Linking

Fields with an asterisk are required

Field	Value
Course ID	AFS_2210
URL	http://guides.lib.wayne.edu/content.php?pid=80548&sid=708600
Subject	Africana Studies
Instructor	Hudson, Anne (al7470)
Department	College of Liberal Arts & Sciences
Department Name (ie - Anthropology, American Studies, etc.)	Africana Studies

Cancel Update

BlackBoard to LibGuides Linking

Search

Liaison like -- any --

College like -- any --

Department like -- any --

SubjectDesc like -- any --

Search

Blackboard to LibGuides database

Results: 1 - 50 of 308

Add New	Subject Code	Subject Description	URL	Department	Instructor	Department Name
Edit	AED	Educ: Art Education	http://guides.lib.wayne.edu/content.php?pid=80548&sid=708600	College of Liberal Arts & Sciences	Hudson, Anne (al7470)	Africana Studies
Edit	AET	Alternative Energy Technology	http://guides.lib.wayne.edu/content.php?hs=a&pid=70949	College of Engineering	Van Loon, James (cv3901)	Energy Technology Program
Edit	AFA	Art: Fashion Design & Merchand	http://guides.lib.wayne.edu/content.php?hs=a&pid=73173	College of Fine, Performing & Art and Art History	Sybelton, Diane (ac7255)	Art and Art History
Edit	AFI	Art: Fibers	http://guides.lib.wayne.edu/content.php?hs=a&pid=70949	College of Engineering	Sybelton, Diane (ac7255)	Energy Technology Program
Edit	AFS	Africana Studies	http://guides.lib.wayne.edu/content.php?hs=a&pid=80548	College of Liberal Arts & Sciences	Hudson, Anne (al7470)	Africana Studies
Edit	AFS_1010	Africana Studies	http://guides.lib.wayne.edu/content.php?pid=80548&sid=769685	College of Liberal Arts & Sciences	Hudson, Anne (al7470)	Africana Studies
Edit	AFS_2010	Aesthetic Roots	http://guides.lib.wayne.edu/content.php?pid=80548&sid=2560501	College of Liberal Arts & Sciences	Hudson, Anne (al7470)	Africana Studies
Edit	AFS_2210	Africana Studies	http://guides.lib.wayne.edu/content.php?pid=80548&sid=708600	College of Liberal Arts & Sciences	Hudson, Anne (al7470)	Africana Studies
Edit	AET	Alternative Energy Technology	http://guides.lib.wayne.edu/content.php?hs=a&pid=70949	College of Engineering	Van Loon, James (cv3901)	Energy Technology Program
Edit	AFA	Art: Fashion Design & Merchand	http://guides.lib.wayne.edu/content.php?hs=a&pid=73173	College of Fine, Performing & Art and Art History	Sybelton, Diane (ac7255)	Art and Art History

WAYNE STATE UNIVERSITY

My Blackboard Content Collection Archived Courses Faculty Resources Blackboard Videos Student Resources My Career

Library Resources

Winter 2015 Becoming an Urban Educator Sec 003 (TED_2250_1501_003)

Announcements Syllabus Various Articles Assignments Discussion Postings Library Videos and Quiz Service Learning Info Guide Service Learning Groups Tools Help Important WSU Offices and University Policies Library Resources

UNIVERSITY LIBRARIES

Find articles, books, journals, and more

RESOURCES SERVICES LIBRARIES Ask-A-Librarian

Wayne State University Library System / Research Guides / Education / TED2250

Education

Getting Started For Doctoral Students For Faculty Article Databases & Online Journals Multimedia

Welcome!

Welcome to the guide for TED2250

This guide contains WSU library system resources to support the coursework in TED2250.

Please take our survey! Your feedback is important to us!

Other Tools You Can Use

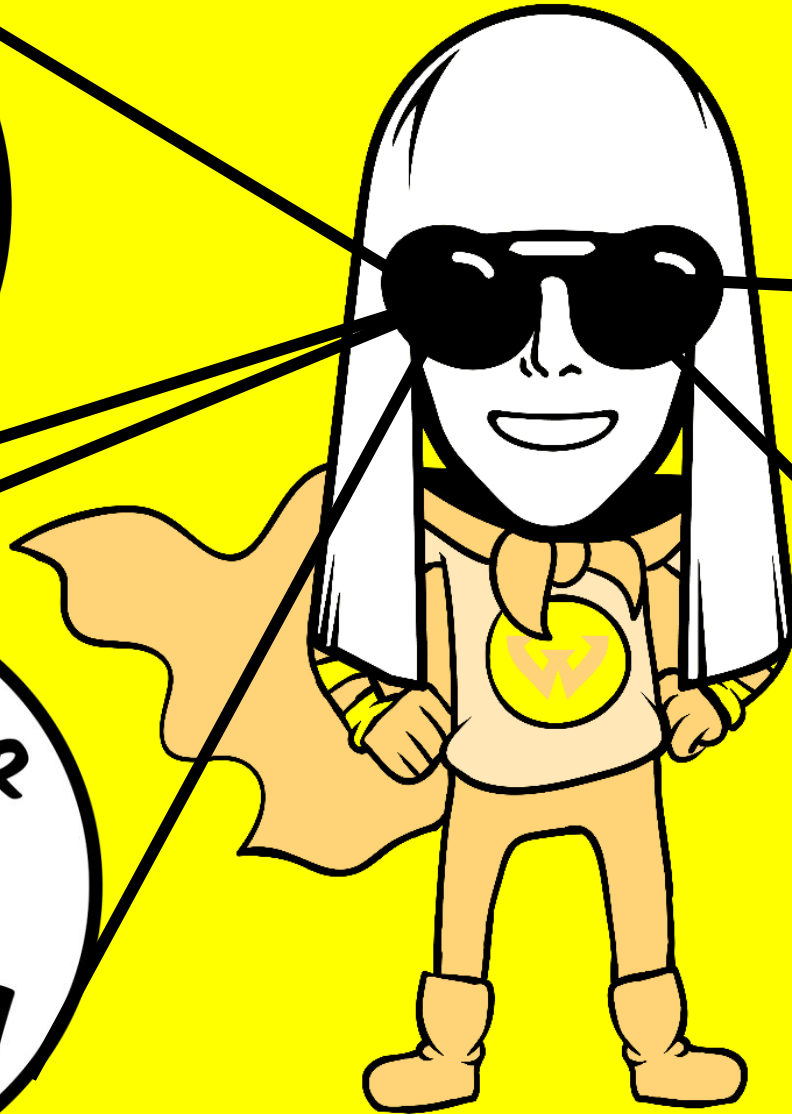
- Research Guides: Research Guides to resources for over 60 subject areas.
- YouTube--Wayne State Libraries: Link to online videos to help with searching for articles, using library databases, accessing full-text, and more.
- Assignment Planner: Enter a start date and a due date for your research.

Populates each Blackboard course

**SHRINKING
THE FACULTY
LEARNING
CURVE**

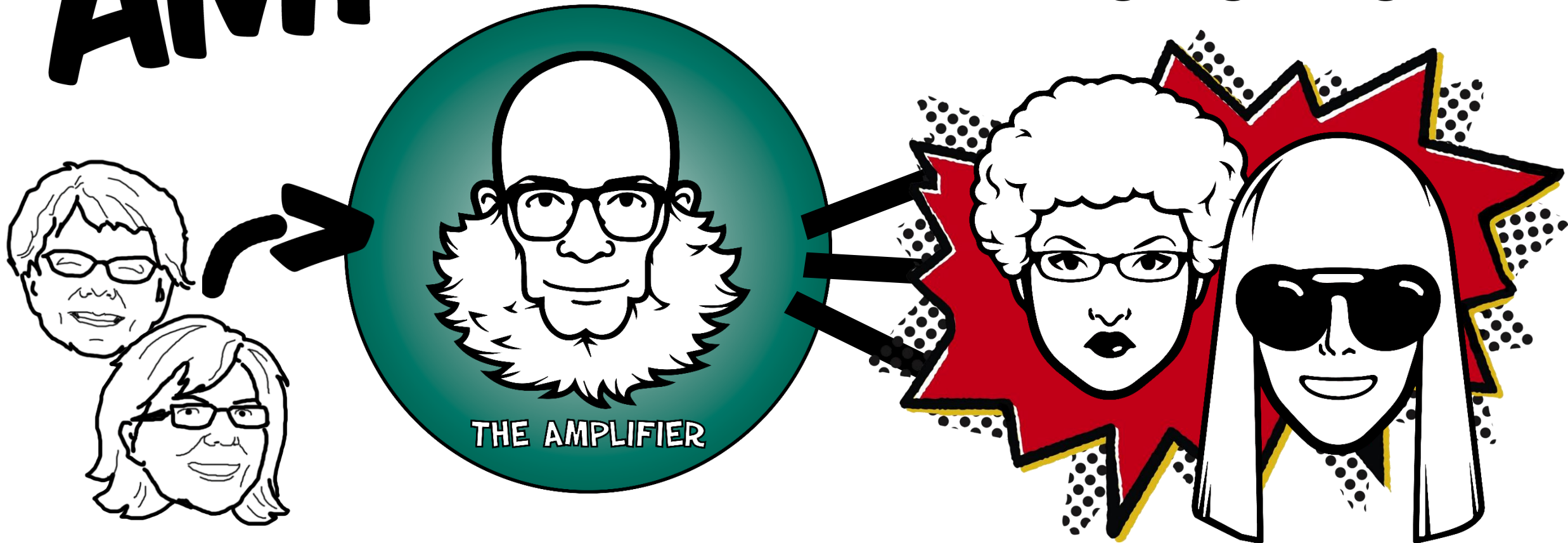
**SCALING OUR
PRESENCE
IN THE
CLASSROOM**

**ZAPPING
SINGLE
POINTS OF
FAILURE**



THE AMPLIFIER!

AKA
FUNCTIONAL
SPECIALIST

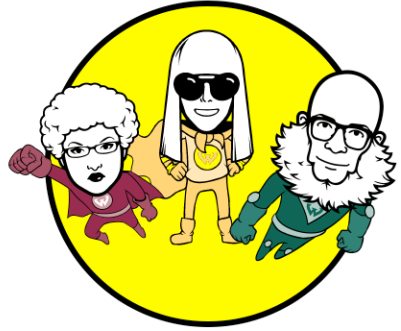


**EMPOWER
LIBRARIANS TO PROVIDE
EXTRAORDINARY
SERVICE**





BRIDGE THE GAP

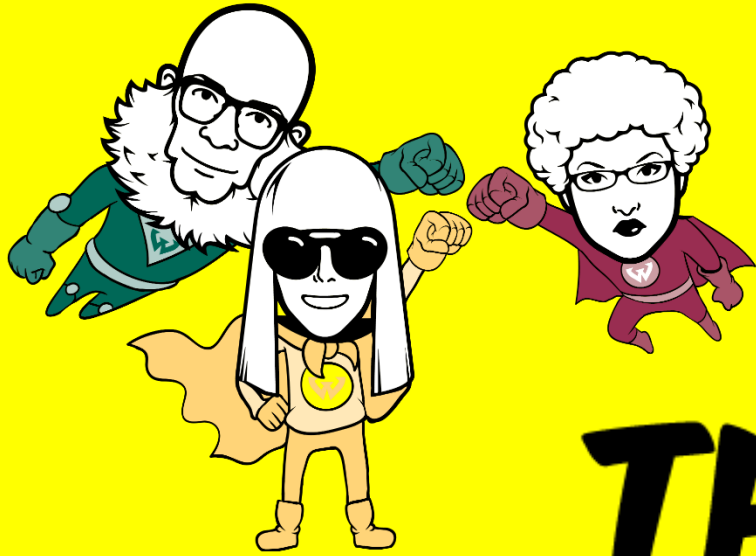


**WHO
ARE MY
PARTNERS?**

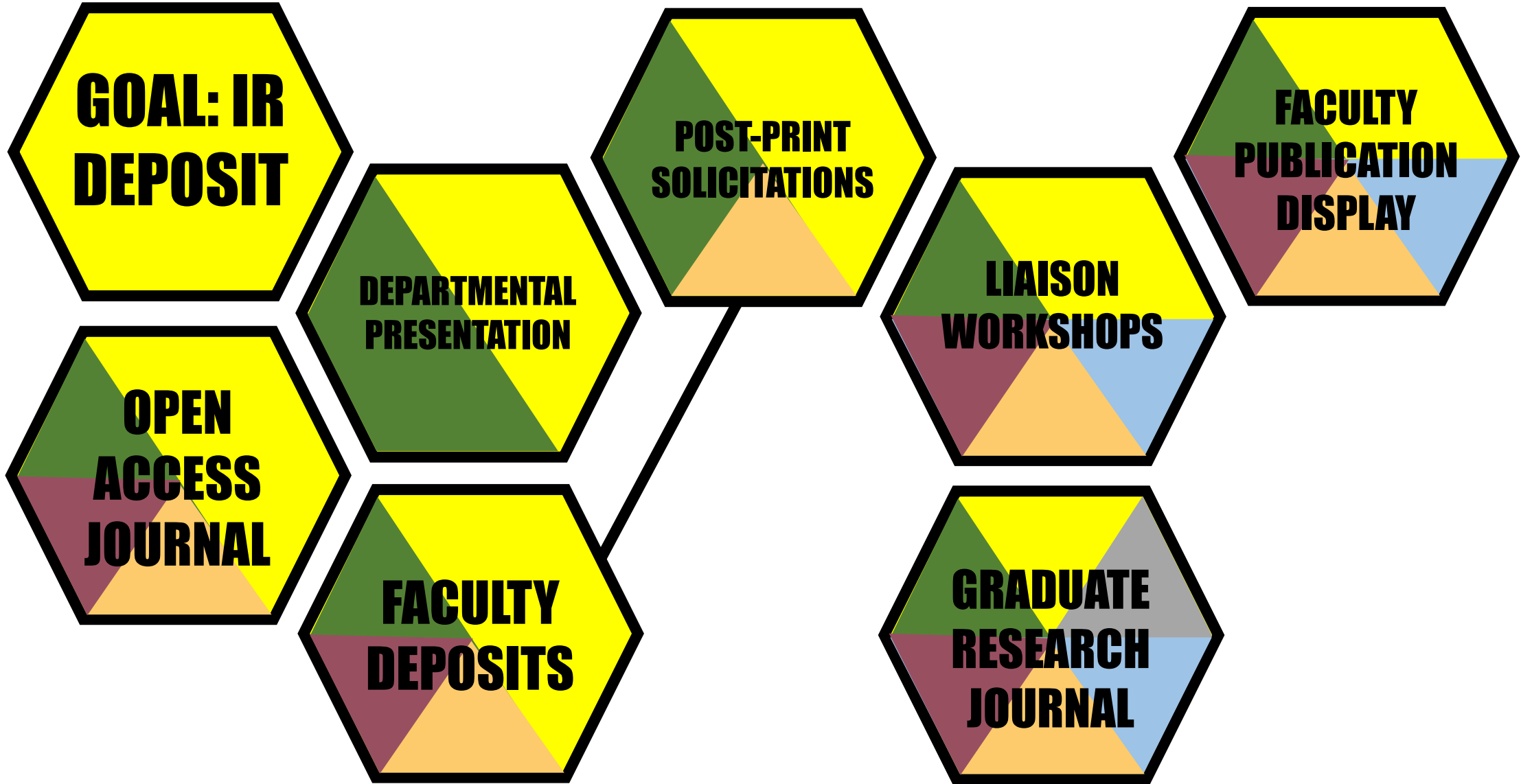
**WHAT
ARE MY
SYSTEMS?**

**WHO
ARE THE
FUNCTIONAL
SPECIALISTS?**

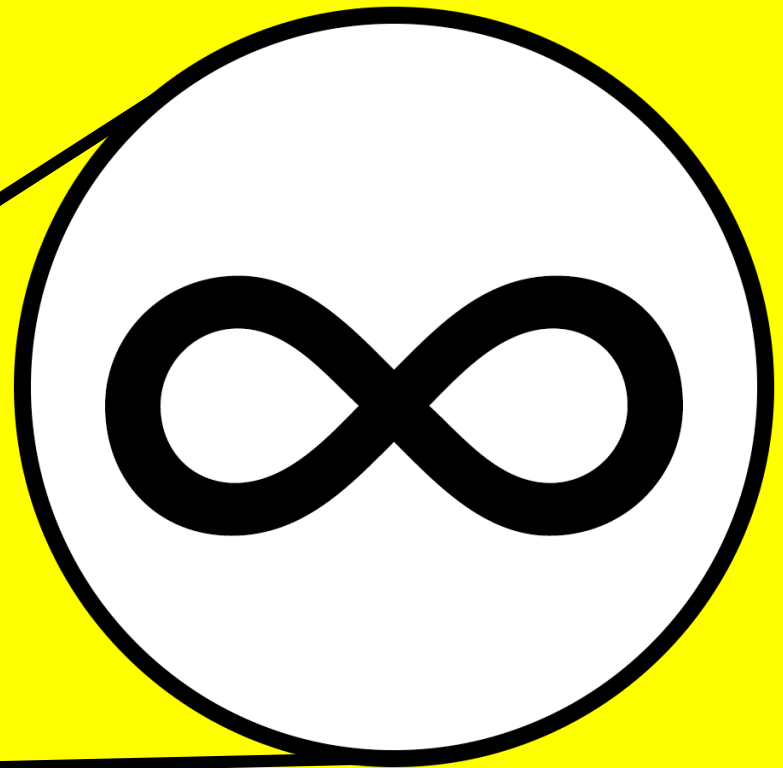
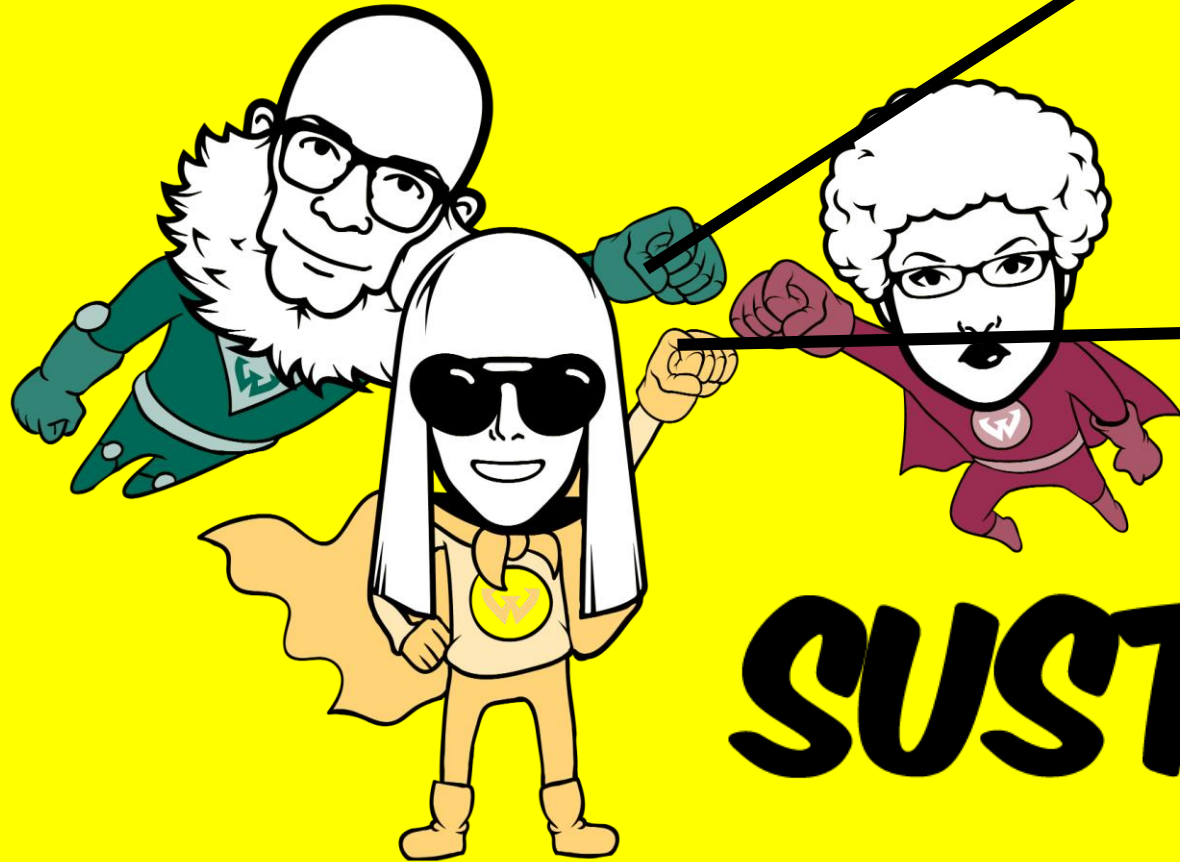
**PADLET.COM / WSUINST / YOURLEAGUE
(OR LINK FROM TWITTER #LIBRARIANLEAGUE)**



**EXPLOIT
THE AWESOME
POWER OF
MULTIPLICITY!**



**WHEN OUR POWERS
ARE IN LEAGUE,
WE ACHIEVE...**



SUSTAINABILITY!

QUESTIONS?



**HERO DESIGNS BY
"THE SKETCHER"
VINCENT ROBERTS**



**ACRL 2015
PORTLAND, OR
MARCH 27**

**JUDITH.ARNOLD
VERONICA.BIELAT
JOSHUA.NEDS-FOX**



} @WAYNE.EDU